

*You are manager responsible for
the business in company.
You understand terms like*

*Profit,
Cost,
Customer,
Product,
Product family,
Brand name,
but you do not understand
SELECT,
FROM,
CROSS JOIN ...*

*You want to analyze business
using your knowledge without
learning any programming and any
program languages.*

Microsoft
GOLD CERTIFIED
Partner

You are at the right place!

When others stop ...



Manager 4

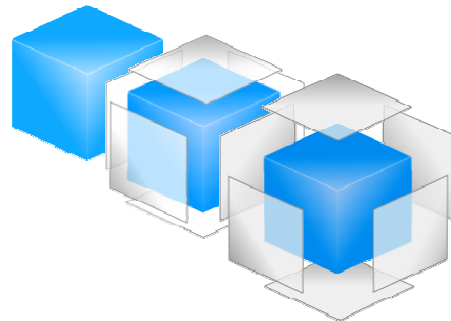
... magic begins!

Manager 4

=

Fast Return of Investment

SoftPro Manager 4



**BUSINESS INTELLIGENCE
SOFTWARE**

**SoftPro Manager 4.0 is specialized application
suite providing decision makers with
extremely fast analysis.**

"It is a well known fact that it takes some time from implementation of a new technology to its actual use. SoftPro Manager 4.0 not only implemented technology, but instantly raised our users to the new level of understanding and managing already existing data..."

"With the introduction of the SoftPro Manager 4.0 we still run the same business. The difference now is: we run it better."

Igor Ohlhofer

MAGMA

(Croatian

Fashion & Retail

market chain)

USERS

- Magma
- Medika
- Kvasac
- Bavaria pivo
- Daruvarska pivovara
- Renoprom
- Feniks kompjuteri
- 4th Dimension
- Bura 1
- Maras
- Wulf sport
- Montana
- MRSS
- FINA
- Peko dal
- Robot commerce
- Getro
- University of Economy Osijek
- FER Zagreb
- BO Consulting France
- Komet Germany

SITUATION

Today's increased competition require daily tracking of company's business and quick reactions to signals from a business environment.

In such situation, efforts to obtain relevant information from a standard information system result in a slow reporting, increased costs, temporary solutions, and unconsolidated data.

Decision makers cannot rely on that anymore. Therefore, they need a new approach.

Modern data warehouse systems, primarily designed for managers, analysts and, in general, decision makers, transform corporate data into valuable business information. These systems represent up to date technological achievements.

Every company expects a complete and adaptable solution: easy to use and the one that justifies investment. It is a well known fact that an investment in a data-warehouse returns very quickly.

SoftPro Manager 4.0 is an excellent choice that not only provides a user-friendly interface for OLAP systems, but goes ahead of today's OLAP clients bringing powerful business analyses and lots of extras in a single package.

SOLUTION

SoftPro Manager 4.0 is a decision-support tool that supplements any existing system.

Designed for executives, planners and business analysts, SoftPro Manager 4.0 fills a huge gap in the market with its unique and highly customizable features, providing end users with completely new possibilities of managing a company in today's competitive market.

Standard OLAP clients are required to facilitate strategic and tactical decisions based on accurate information. SoftPro Manager's allows you to:

- monitor the harmony among business processes through ordinary measures (year, quarter, month, week, day...)
- efficiently control any business area
- avoid inconsistent reports made from heterogeneous information sources
- get complex reports in real time (1-5 seconds)

What really makes SoftPro Manager 4.0 a sound economic investment is its ability to use existing business data, regardless of the underlying platform or applications.

BENEFITS

SoftPro Manager 4.0 supports all features introduced by the Microsoft Analysis Services. By following standards for data exchange, it can access any data, thus making them a source for future analysis.

Presentation of results is provided through rich tabular and graphical displays providing exception highlighting ("good" and "bad" values), filtering and comparison of results. Apart from 2D and 3D graphs, SoftPro Manager 4.0 stands out with another feature: a second series graph which provides different perspective of the data being analyzed.

SoftPro Manager 4.0 has also made an extra step to make analysis more familiar to a common user. It provides numerous built-in "Wizards" for specialized actions or analyses. This way, common tasks like time and percentage analyses (to name just two) can be performed with a few mouse clicks.

Apart from being a leading analysis application for OLAP data sources, SoftPro Manager 4.0 also covers the traditional area of everyday business reporting, including:

- an integrated viewer for sharing SoftPro Manager reports and Microsoft Office documents
- top reporting tools like Crystal and ComponentOne reports

Today, security matters the most. Therefore, we designed a special part of our product suite that takes care of this issue only.

Two standards for electronic document exchange (Internet and E-mail) are fully supported. We also support Excel, PDF and HTML files, enabling analysts to prepare the results in appropriate format for their executives.

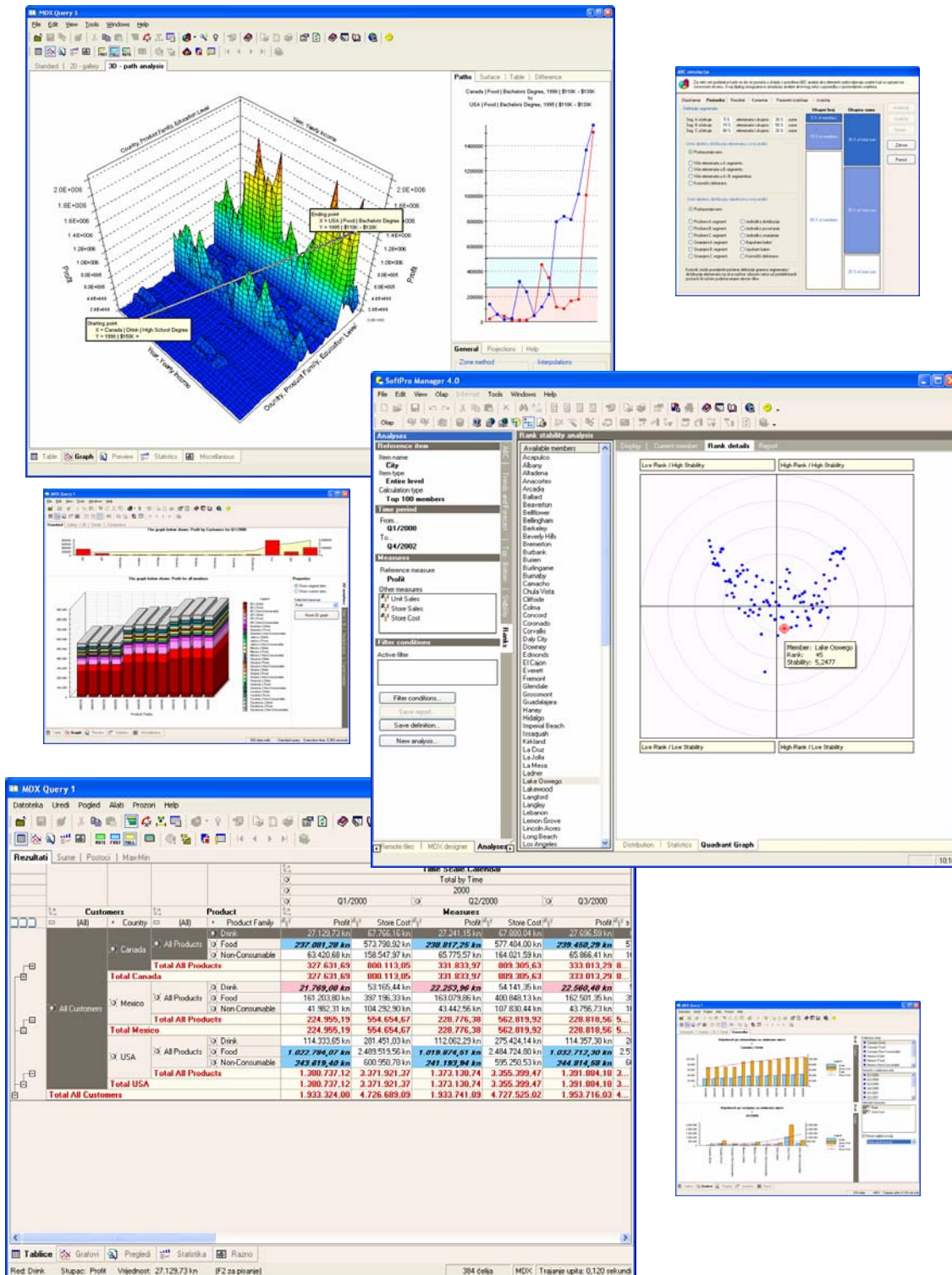
***Unique OLAP client that helps you
analyze past and clearly see the future***

Microsoft
GOLD CERTIFIED
Partner

ADVANTAGES

SoftPro Manager 4.0 has a unique feature: ability to use parameters in OLAP queries. By using them, users can perform a set of similar queries and compare the results.

This is just a tip of an iceberg when it comes to SoftPro Manager 4.0 functionality. Live data in tables and graphs and simple access to elements and structures truly empower any decision maker. However, the most profit can be gained from a series of integrated business analyses, not available in any other OLAP client on the market. They provide managers with an easy-to-use approach to answering the typical questions like: "who are my most valuable customers, which are my most profitable products or services, channels and stores, how stable is the sales of my products and services, how are my customers and products ranked during a period, what are trends and correlations between products"...



TOP FEATURES

Business Analyses

ABC

Trend & Forecasting

Top – Bottom

Ranks

Stability

What-If

Exceptions

Correlations

Result displays

Tabular data

Graphs (2D & 3D)

Second series

Integrated viewer

Enterprise-scale

reporting

Data exports (Excel, HTML, PDF)

Extras

User friendly query designer/editor

Wizards

Fast search

Parameter support

Full OLAP structures & function support

E-mail support

Rich customization

Security

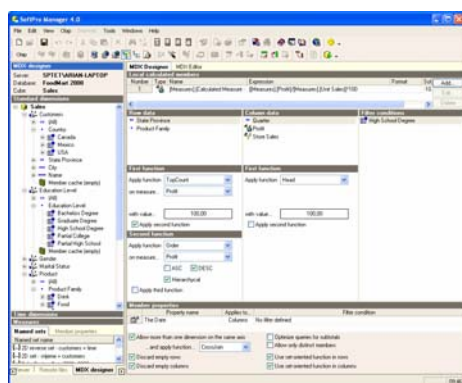
Extensibility



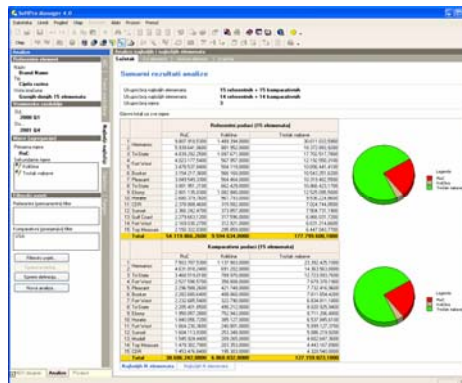
VeriTest.

SoftPro Manager 4.0 is a result of a 5 year extensive development and experience. It's membership in the prestigious *Microsoft Data-warehouse Alliance* shows our commitment to providing software for worldwide deployment according to the highest industry standards. It is a true "value-for-money" product, with significantly lower pricing than competition.

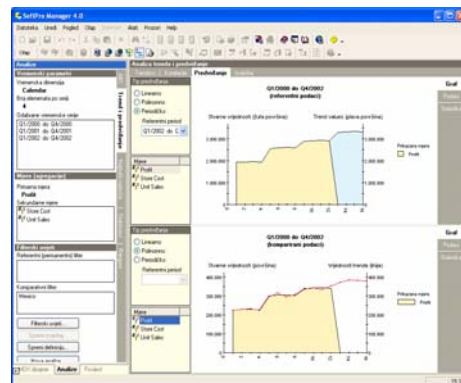
Microsoft
GOLD CERTIFIED
Partner



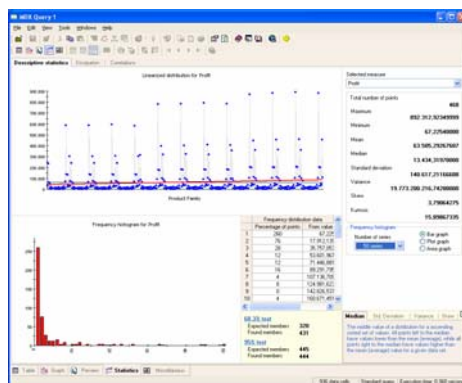
MDX Designer



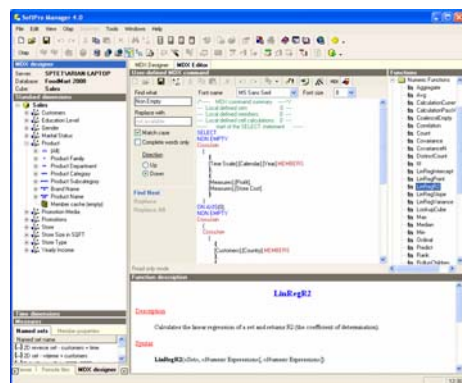
Top-Bottom Analysis



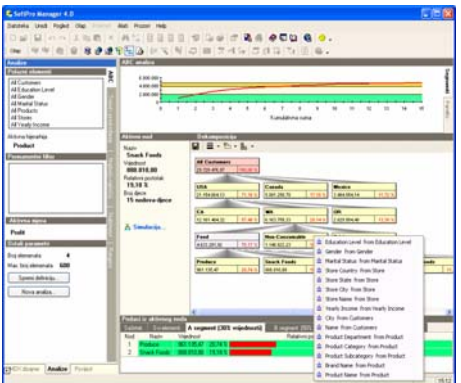
Trend and Forecast Analysis



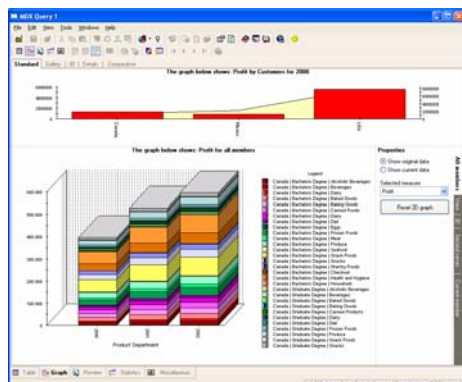
Descriptive statistics



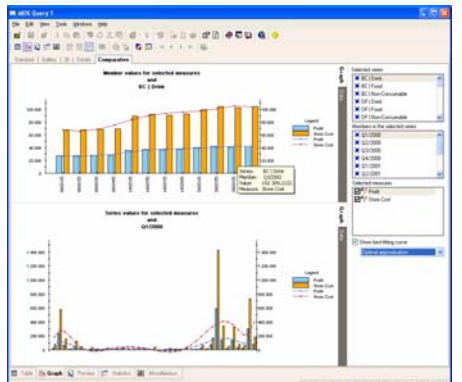
MDX Editor



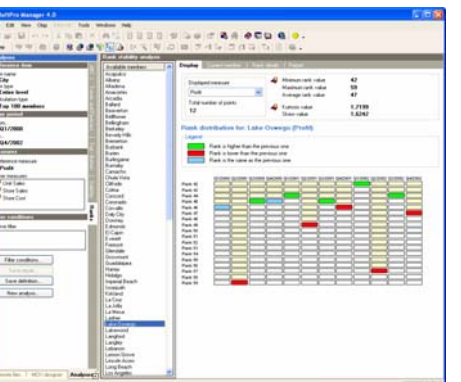
ABC Analysis



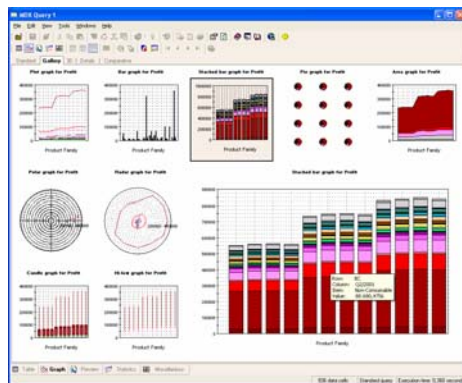
2D Analysis



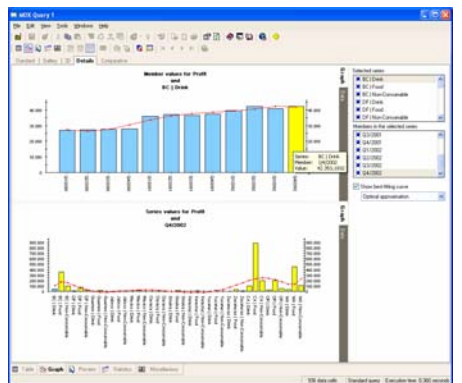
Comparative Graph Analysis



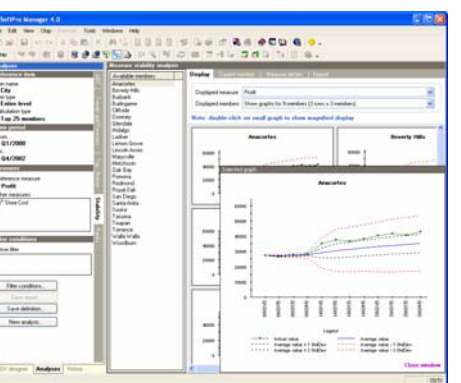
Rank Analysis



2D Graph Selector



Details Graph Analysis



Measure Stability Analysis

SoftPro Tetral d.o.o.
Bozidareviceva 13
10000 ZAGREB
CROATIA

Phone: +385 1 2305775
Fax: +385 1 2305775
WEB: www.softpro.hr

Microsoft
Data Warehousing
Alliance
PLATINUM member
SoftPro Manager 2006

Microsoft
Data Warehousing
Alliance
Certified Member
SoftPro Manager 4.0

Microsoft
GOLD CERTIFIED
Partner